

Beneath the Perfect Mask



Based on the true story

Address: 68 Belsize Park NW3 4EH

Phone: +44 07888200234

E-mail: michael@thirdeyeproductions.co.uk

EXECUTIVE SUMMARY

TITLE: Beneath the Perfect Mask
LENGTH: Feature Film
GENRE: Mystery, Crime, Drama
BUDGET: £TBA
SCRIPT: December 2023

Screenwriter

Michael Carter



As an MA filmmaker from UCA University (Farnham) in the UK, I have cultivated a distinguished 15-year career in film production. My journey began with a passion for visual storytelling, leading to a degree in Film Studies at UCA, where I created two short films. After earning a BA in Drama (Theatre), I entered the film industry, rising from entry-level roles to become a recognized talent.

I have worked on various projects, including feature films, documentaries, and short films, earning numerous awards. My skills span writing, directing, acting, producing, and editing, each contributing to my reputation for creativity and excellence. I

continue to push the boundaries of filmmaking, exploring new techniques and compelling narratives, and making a lasting impact on the industry.

STORY

LOGLINE

When Sherri Papini, a seemingly perfect wife and mother, mysteriously disappears, her community is thrust into a whirlwind of suspicion and secrets, unravelling a shocking tale of deception, betrayal, and the relentless search for the truth beneath the perfect mask.

\$50,000 REWARD

WHERE IS SHERRI PAPINI?

Known to be wearing this pink running top

MISSING FROM REDDING, CA

Age- 34, Eyes- Blue, Hair- Blonde, Height- 5'3", Weight- 100 lbs

Sherri was last seen 11/2/16 on Sunrise Drive (Redding, Ca) at approximately 2:00 p.m. jogging/walking alone. Sherri was wearing a pink running top (shown above). If you've seen her, know where she is, or have any information of her whereabouts, call the Shasta County Sheriff's Office 530-245-6540, Shasta Co Secret Witness 530-243-2319 or Nor-Cal Alliance For The Missing anonymous tipline at 530-378-4491

f HELP FIND SHERRI PAPINI

Synopsis

"Beneath the Perfect Mask" tells the unsettling true story of Sherri Papini, a devoted wife and mother who mysteriously disappears during her routine jog, plunging her community into a state of shock and despair. The film unravels the harrowing events that unfold after her reappearance, revealing a web of lies, violence, and betrayal.

The story begins with Sherri's idyllic life as a beloved wife and doting mother. Her sudden disappearance sends shockwaves through the tight-knit community, prompting an intensive search effort led by local law enforcement and the FBI. The public sympathizes with Sherri's plight, considering her the epitome of a supermom. After an agonizing 24 days, Sherri miraculously reappears, physically and emotionally

scarred. She alleges that she was abducted by two women who subjected her to unimaginable torment. The nation is captivated by her story, and the media frenzy surrounding her case escalates to unprecedented heights.

The narrative follows the twists and turns of Sherri's life as her secrets unravel. These secrets involve hidden, dangerous relationships, a double life, and a sinister past she had successfully concealed for years. Each revelation shatters the illusion of her idyllic world while leaving behind a trail of unanswered questions.

However, as the investigation progresses, cracks begin to appear in Sherri's account. Detectives, driven by their determination to uncover the truth, discover damning evidence: the presence of her ex-boyfriend's DNA on her clothes. The revelation casts doubt on Sherri's credibility and sets in motion a relentless pursuit of the real story behind her disappearance. As the layers of deception are peeled away, the movie turns dark. The once-admired Sherri is exposed as a complex and flawed individual, engaging in secret affairs with

multiple men and betraying her family and community. The narrative explores the lengths to which Sherri went to maintain her facade, blurring the lines between truth and fiction. Tensions escalate within Sherri's family, particularly with her husband, Keith, who struggles to reconcile the woman he thought he knew with the emerging truth. The film delves into the psychological impact on Keith as he grapples with feelings of betrayal and a crumbling sense of identity.

Each revelation transforms the public's perception of Sherri from sympathy to outrage and disbelief. The community that once rallied around her now stands divided, shattered by the lies that have unravelled their trust. The film delves into the consequences of deceit, exploring the devastating aftermath of Sherri's actions on her loved ones and the town she once called home. The gripping climax unveils the truth in a tense courtroom showdown. Sherri's arrest and subsequent trial serve as the ultimate reckoning, shedding light on the full extent of her deception and the damage inflicted on those closest to her.

Plot summary!

A seemingly perfect mother and wife, Sherri Papini embarks on her regular jog one day but mysteriously disappears without a trace. Concerned and frantic, her husband, Keith, reports her missing to the authorities. The community rallies together in support of finding Sherri, considering her a beloved member of the town.

After an agonizing wait of 24 days, Sherri reappears, dishevelled and disoriented. She claims she was kidnapped by two women who held her captive during her absence. The revelation shocked everyone, triggering a widespread investigation led by local law enforcement and the FBI. The media attention intensifies as Sherri's story captivates the nation.

Summary of the story

Sherri Papini is a young mother living with her family in a small town in California. She is known for her beautiful appearance and is admired by her community for her parenting skills. Her husband Keith is a hardworking salesman with two young children, a boy and a girl.

One day, Sherri runs on the rural roads outside her town. She never returns home. The community is up in arms, and the police and the media get involved. Sherri's husband, Keith, starts a search party with the community's support. Eventually, Sherri is found three weeks later, bruised, beaten, and half-starved by the side of the road, where she was initially reported missing.

At first, everyone is sympathetic towards Sherri and wants her to recover from the trauma. But as time passes, inconsistencies in her story start to surface, including accusations of her own family members.

The police investigation leads them to discover shocking truths about Sherri's past- a history of lies, violence, and betrayal involving her family and previous relationships.

The story unravels, and the facade that Sherri had built up over the years begins to shatter as her dark secrets are exposed. Her image as the perfect mother and wife is nothing but a charade, and her family and community members who had supported her start to distance themselves. Ultimately, Sherri is left alone to face the consequences of her actions.

In the climactic finale, the evidence against Sherri becomes overwhelming, leading to her arrest and subsequent trial. The courtroom drama further exposes the depths of her deceit, leaving her family shattered and the community forever scarred by the shocking revelation of the woman they thought they knew.

"Beneath the Perfect Mask" is a gripping psychological thriller that explores the dark side of human nature, showcasing the impact of deception, manipulation, and the destructive consequences of a web of lies. It is a cautionary tale about the dangers of trusting appearances and highlights the enduring strength of truth, even in the face of the most convincing illusions.

Additional information about the themes and tone of the projects

"Beneath the Perfect Mask" is a chilling exploration of the human capacity for deceit and the destructive power of secrets. It examines the fragility of appearances, relationships' complexity, and betrayal's enduring impact. The film serves as a cautionary tale, reminding audiences of the dangers of unchecked facades and the resilience of the truth, even in the face of manipulation and lies.

Ultimately, "Beneath the Perfect Mask" is a cautionary tale exploring the dangers of embracing appearances and the consequences of harbouring a reality submerged in lies, violence, and betrayal.

CHARACTERS

SHERRY PAPINI



Past:

- Born and raised in California, Redding, CA.
- DOB: Jun 11th, 1982 - Age: 34-Year-Old, Hair: Blonde Eye: Blue
- Married to her high school friend Keith
- Mother: Loretta Graeff Father: Rich Graeff
- Siblings: Sheila Koester
- Spouse: David (M. 2006–D.2008), Keith Papini (M.2009- D.2022)
- Children: Tyler Papini, Violet Papini
- Missing: November 2nd, 2016, Return: November 24th, 2016
- Her favourite song "Everything" Michael Bublé's

Keith Papini



- Born and raised in Redding, California.
- DOB: March 1980- Age: 36-Year-Old:
- Married to her high school friend Sherry
- Spouse: Sherri Papini (M.2009- 2022)
- Children: Tyler Papini, Violet Papini

PRODUCTION



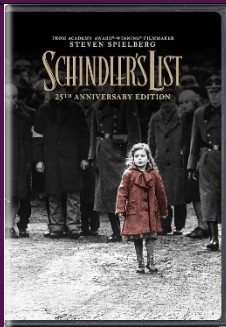
❖ script 107 page

❖ 70 Scenes

❖ 52 persons cast and 6 main characters

❖ 14 locations

In the following I mentioned some movies based on true stories, there's a wide range of genres to explore and some other movies that share its elements of psychological thriller, dark themes, complex characters, and unexpected twists.

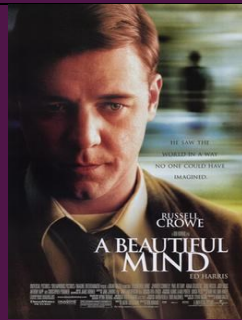


Schindler's List (1993)

Directed by Steven Spielberg, this film tells the story of Oskar Schindler, a businessman who saved the lives of more than a thousand Jewish refugees during the Holocaust.

Budget: \$ 22m

Box Office: \$ 322.2m



A Beautiful Mind (2001)

Directed by Ron Howard, this biographical drama follows the life of John Nash, a brilliant mathematician who struggles with schizophrenia.

Budget: \$ 78m

Box Office: \$ 318.5m



The Social Network (2010)

Directed by David Fincher, this film depicts the founding of Facebook and the ensuing legal battles.

Budget: \$ 40m

Box Office: \$ 224.9m

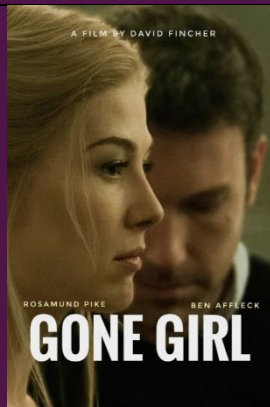


Hidden Figures (2016)

Directed by Theodore Melfi, this film highlights the contributions of African-American women mathematicians at NASA during the early years of the U.S. space program.

Budget: \$ 25m

Box Office: \$ 236m

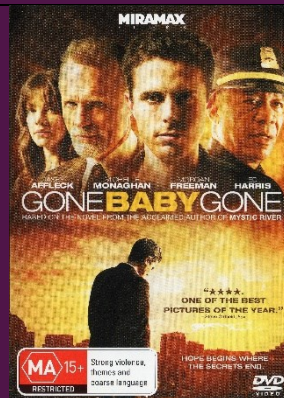


Gone Girl (2014)

Directed by David Fincher and based upon the global bestseller by Gillian Flynn -- unearths the secrets at the heart of a modern marriage.

Budget: \$ 61m

Box Office: \$ 369m



Gone Baby Gone (2007)

Directed by Ben Affleck, this film also deals with a missing person case and delves deep into the moral ambiguities of its characters.

Budget: \$ 19m

Box Office: \$ 34.6m



The Girl with the Dragon Tattoo (2011)

Directed by David Fincher, like "Gone Girl," this film features a complex mystery, a strong female lead, and a dark, gripping narrative.

Budget: \$ 90m

Box Office: \$ 139m



Mystic River (2003)

Directed by Clint Eastwood, this film explores the impact of a violent crime on a group of childhood friends, blending mystery and deep character study.

Budget: \$ 25-30 m

Box Office: \$ 156.6m